











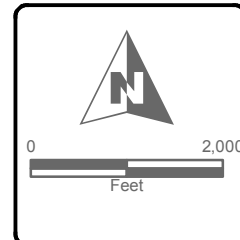
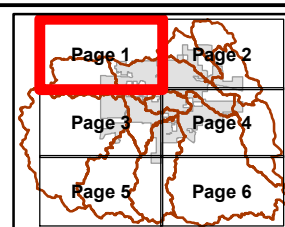


-  Study Reaches  Interstate
 Open Channel  State or US Highway
 Major Basin  Streets
 Subbasin  Railroad
 City Limits
 Study Area

	61 - 70
	71 - 80
	81 - 90
	91 - 100

- 69 Sub-basin Curve Number
07_107 Sub-basin ID

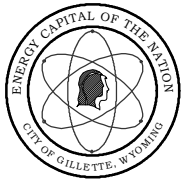
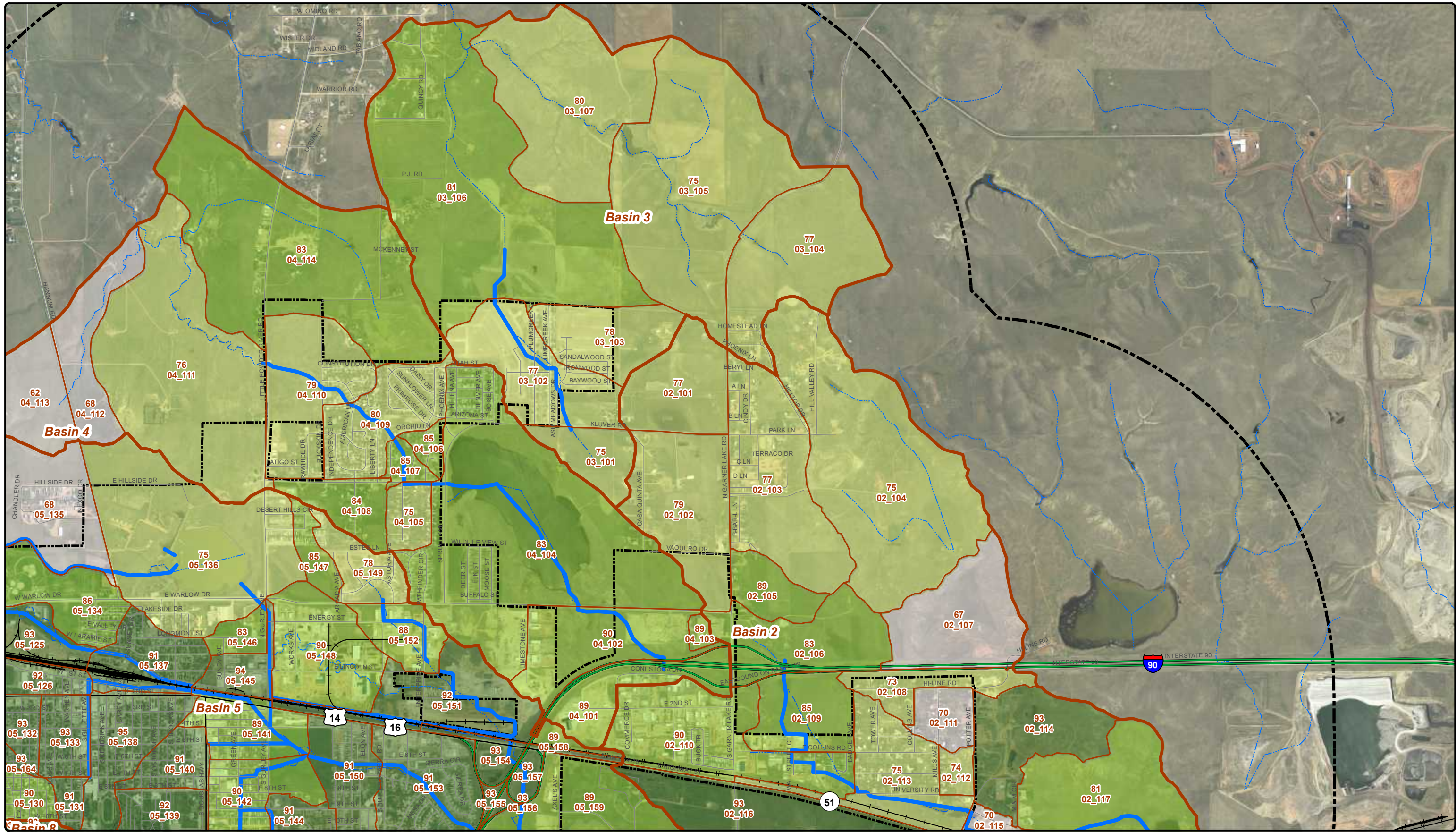
THE INFORMATION ON THIS DRAWING WAS OBTAINED FROM RECORD AND DESIGN DRAWINGS. THE CITY OF GILLETTE MAKES NO GUARANTEE REGARDING THE ACCURACY OF THIS DRAWING OR THE INFORMATION CONTAINED THEREIN.



Future Condition Curve Numbers
Page 1 of 6

Gillette Stormwater
 Master Plan

T:\Projects\2224\173_Gillette_Stormwater\516_00\T.O. 045\T.O. 05_Maps\Figures 201008\Figures 1-6.mxd 8/19/2011



CITY OF GILLETTE 201 E. 5TH STREET
GILLETTE, WY 82717 (307) 686-5564

URS

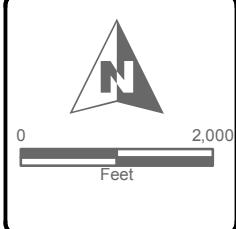
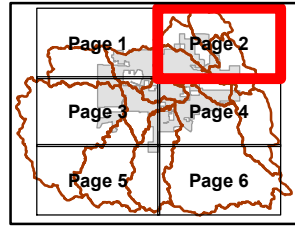
- Study Reaches
- Open Channel
- Major Basin
- Subbasin
- City Limits
- Study Area
- Interstate
- State or US Highway
- Streets
- Railroad

Curve Numbers

61 - 70
71 - 80
81 - 90
91 - 100

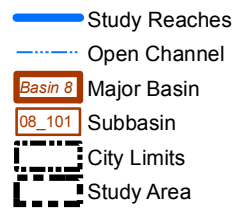
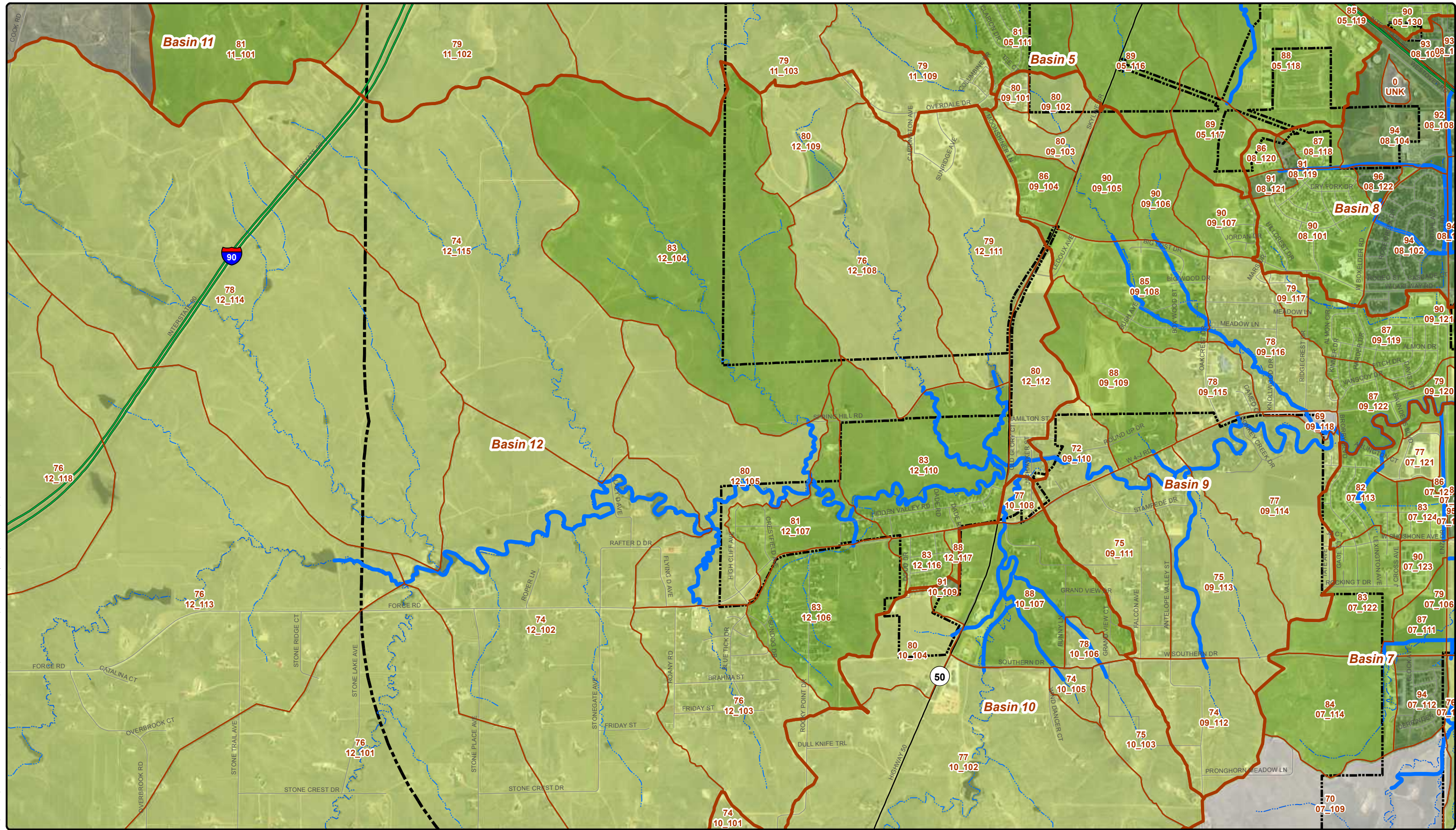
69 Sub-basin Curve Number
07_107 Sub-basin ID

THE INFORMATION ON THIS DRAWING WAS OBTAINED FROM RECORD AND DESIGN DRAWINGS. THE CITY OF GILLETTE MAKES NO GUARANTEE REGARDING THE ACCURACY OF THIS DRAWING OR THE INFORMATION CONTAINED THEREIN.




Future Condition Curve Numbers
Page 2 of 6

Gillette Stormwater Master Plan 3.5



 City Limits



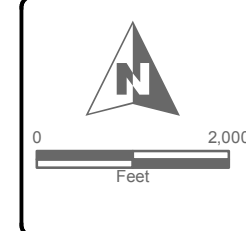
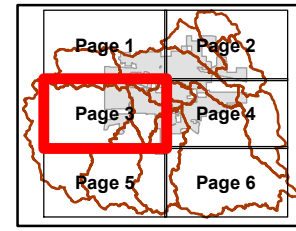
Study Area

• Railroad

91 - 100

69
07_107

THE INFORMATION ON THIS DRAWING WAS OBTAINED FROM RECORD AND DESIGN DRAWINGS. THE CITY OF GILLETTE MAKES NO GUARANTEE REGARDING THE ACCURACY OF THIS DRAWING OR THE INFORMATION CONTAINED THEREIN.

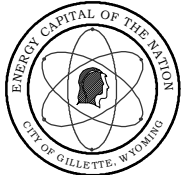
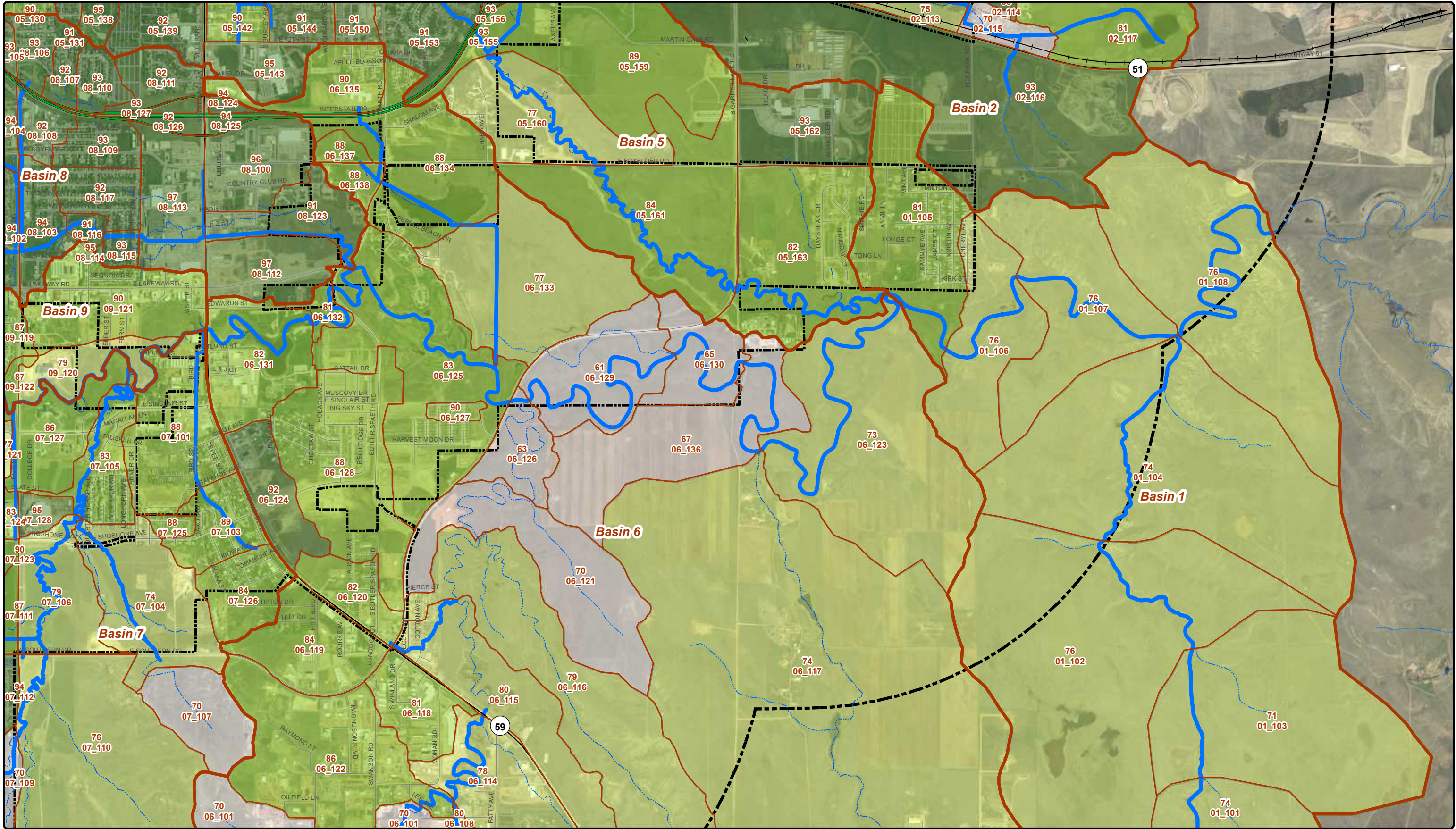


Future Condition Curve Numbers
Page 3 of 6

Gillette Stormwater
Master Plan

3.5

T:\Projects\2224\173_Gillette_Stormwater\516_00\T.O. 040_045\T.O. 045_Maps\Figures 2010\08_Fig-05_Future Curve Numbers 1-6.mxd 8/19/2011



CITY OF GILLETTE 201 E. 5TH STREET
GILLETTE, WY 82717 (307) 686-5564

URS

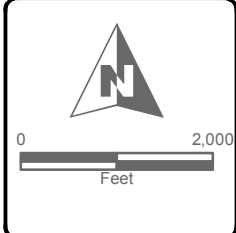
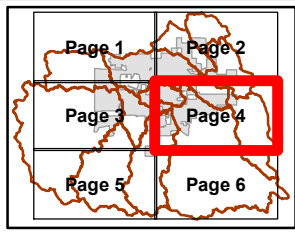
- Study Reaches
- Open Channel
- Major Basin
- Subbasin
- City Limits
- Study Area
- Interstate
- State or US Highway
- Streets
- Railroad

Curve Numbers

- 61 - 70
- 71 - 80
- 81 - 90
- 91 - 100

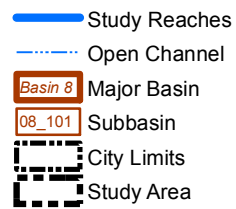
69 Sub-basin Curve Number
07_107 Sub-basin ID

THE INFORMATION ON THIS DRAWING WAS OBTAINED FROM RECORD AND DESIGN DRAWINGS. THE CITY OF GILLETTE MAKES NO GUARANTEE REGARDING THE ACCURACY OF THIS DRAWING OR THE INFORMATION CONTAINED THEREIN.



Future Condition Curve Numbers
Page 4 of 6

Gillette Stormwater Master Plan 3.5

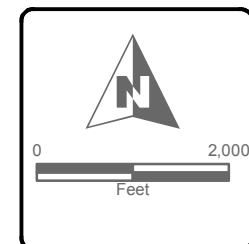
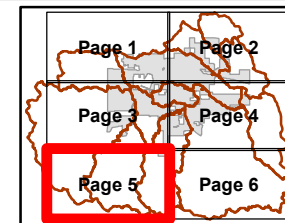


 Interstate
 State or US Highway
 Streets
 Railroad

	61 - 70
	71 - 80
	81 - 90
	91 - 100

69 Sub-basin Curve Number
07_107 Sub-basin ID

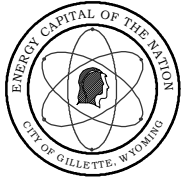
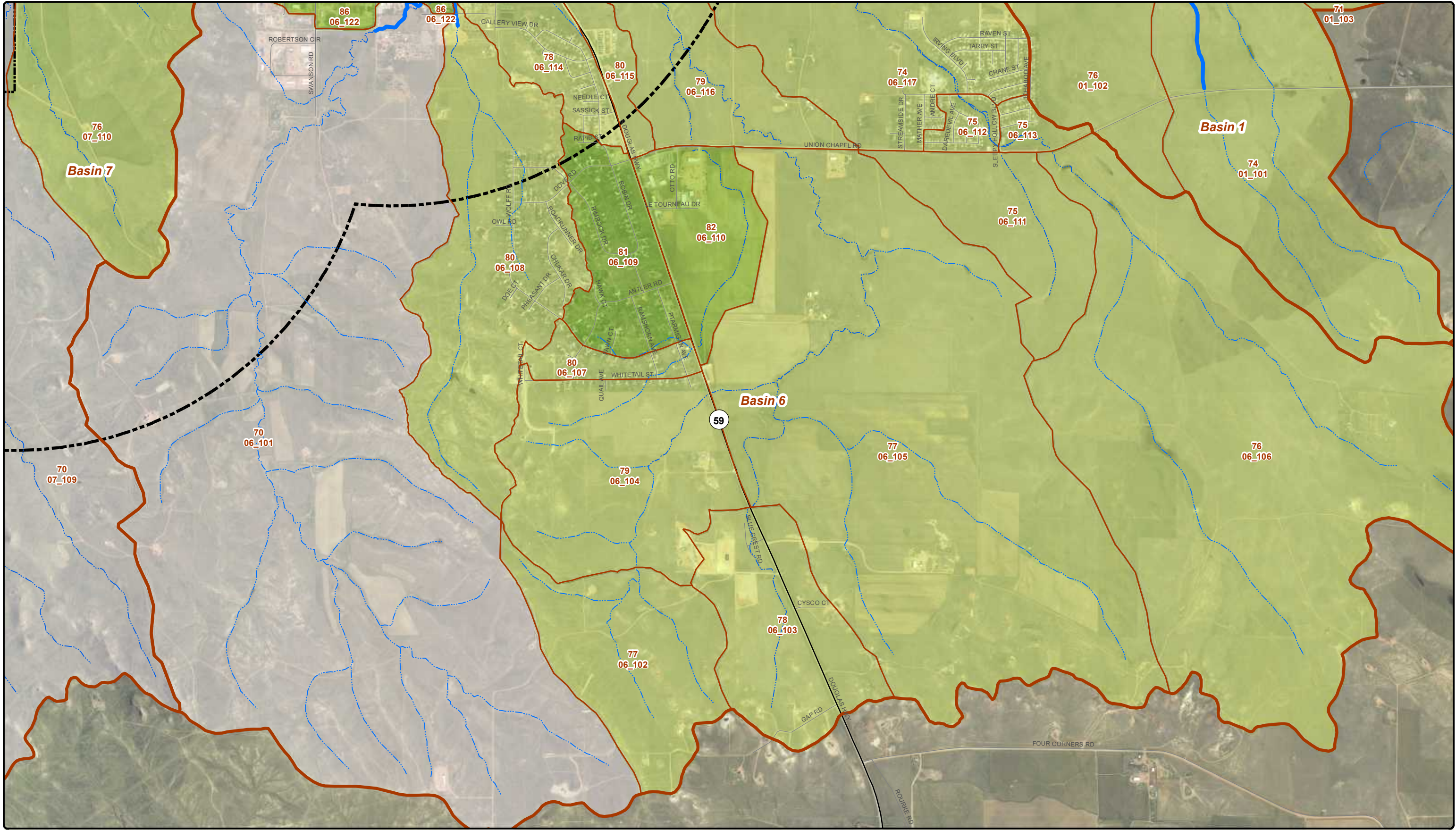
THE INFORMATION ON THIS DRAWING WAS OBTAINED FROM RECORD AND DESIGN DRAWINGS. THE CITY OF GILLETTE MAKES NO GUARANTEE REGARDING THE ACCURACY OF THIS DRAWING OR THE INFORMATION CONTAINED THEREIN.



Future Condition Curve Numbers
Page 5 of 6

Gillette Stormwater Master Plan 3.5

T:\Projects\2224\173_Gillette_Stormwater\5k_00\T.O._040_015\T.O._015_Maps\Figures 2010\08\Figures 2010\08_Figures 1-6.mxd 8/19/2011



CITY OF GILLETTE 201 E. 5TH STREET
GILLETTE, WY 82717 (307) 686-5364

URS

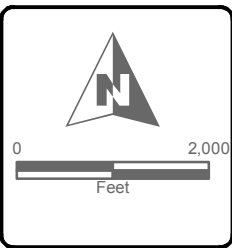
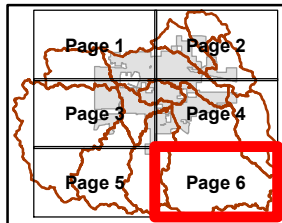
- Study Reaches
- Open Channel
- Basin 8
- 08_101
- City Limits
- Study Area
- Interstate
- State or US Highway
- Streets
- Railroad

Curve Numbers

- 61 - 70
- 71 - 80
- 81 - 90
- 91 - 100

69 Sub-basin Curve Number
07_107 Sub-basin ID

THE INFORMATION ON THIS DRAWING WAS OBTAINED FROM RECORD AND DESIGN DRAWINGS. THE CITY OF GILLETTE MAKES NO GUARANTEE REGARDING THE ACCURACY OF THIS DRAWING OR THE INFORMATION CONTAINED THEREIN.



Future Condition Curve Numbers
Page 6 of 6

Gillette Stormwater Master Plan 3.5